

Pressure Gauges

Gas Test gauge



YG SERIES GAS TEST GAUGE

YG1/2-11, YG3/4-11, YG1-11

Description

Gas test gauges mainly used for pressure measurement of gas to test gas leak and fault detection of pipeline Application.

Application

- gas combustion equipment
- gas fired heating system
- gas pipelines

Specification

Nominal Size: 2.0" (50mm)

Accuracy: $\pm 1.0\%$, $\pm 1.6\%$, $\pm 2.5\%$

Pressure Range: 0...100psi

Working Temperature: -20°C ... 60°C

Case: Steel black painted

Ring: Steel black painted

Connection: Brass

Thread: 1/2"NPT, 3/4"NPT, 1NPT

Bourdon tube: Phosphor bronze, C-type

Movement: Brass

Mounting style: hex style

Housing material: Steel, zinc plated or chrome plated

Dial: Aluminium, White, black lettering

Pointer: Aluminium, black

Window: PC



Options

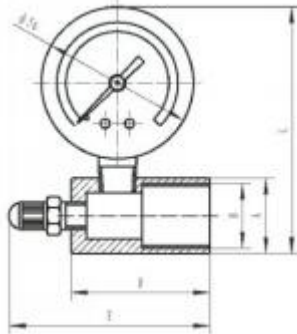
Customize range, scale or logo; connection thread, pressure needle etc

Tel: 0086-574-23688830
Fax: 0086-574-23688830
Email: info@st-meter.com
Web: <http://www.st-meter.com>

Cixi Sito machinery Co.LTD.
West Section Gongye Road, Xinpu Town,
Cixi City, Ningbo, Zhejiang Province, China

Pressure Gauges

Gas Test Gauge



Types		Diameters in mm				
		A	B	C	D	E
YG1/2-11	YG1/2-12	23	1/2"	86	51	74
YG3/4-11	YG3/4-12	28	3/4"	91	51	74
YG1-11	YG1-12	36	1"	99	51	74

Tel:0086-574-23688830
Fax:0086-574-23688830
Email:info@st-meter.com
Web:http://www.st-meter.com

Cixi Sito machinery Co.LTD.
West Section Gongye Road,Xinpu Town,
Cixi City,Ningbo,Zhejiang Province,China