

# Pressure Gauges

## Process Pressure gauge



### S SERIES PROCESS PRESSURE GAUGE

S113/S113Z

#### Description:

Process pressure gauges are suitable for measurements of corrosive and non-obstructive liquids, and gases

#### Application

- Chemical/petro-chemical
- power stations
- mining
- environmental technology
- on-and -off shore
- plant construction

#### Specification

Nominal Size:4.5"(113mm)

Accuracy:±1.0%,±1.6%

Pressure Range:-1...0bar to 0...1000bar

Working Temperature:-20°C...60°C

Case: Polypropylene safety case with baffle wall and blow-out back

Ring:Polypropylene

Connection:Stainless steel

Thread:1/4", 1/2",PT,NPT,BSP and individual

Bourdon tube:Stainless steel ,C-type or Helical type

Movement:Stainless steel

Dial:Aluminium,White,black lettering

Pointer:Aluminium,black

Window: safety glass,tempering glass or PC

Filled:Glycerine or Silicone

Gaskets/Filling cap:Neoprene or Silica gel

#### Options

Customize range, scale or logo; connection thread etc.

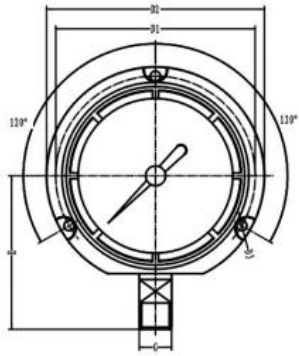


Tel:0086-574-23688830  
Fax:0086-574-23688830  
Email:info@st-meter.com  
Web:http://www.st-meter.com

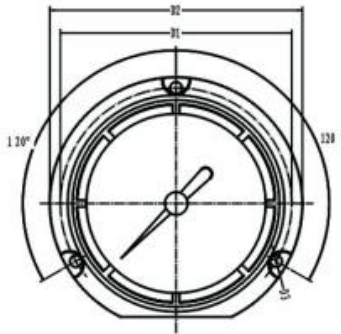
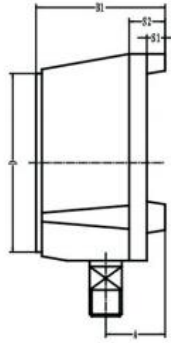
Cixi Sito machinery Co.LTD.  
West Section Gongye Road,Xinpu Town,  
Cixi City,Ningbo,Zhejiang Province,China

# Pressure Gauges

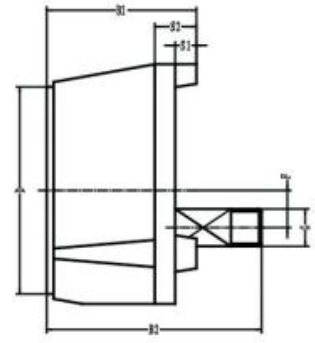
## Process Pressure Gauge



Bottom Connection



Back Connection



Dimensions in mm											
Types	A	B	B2	D	D1	D2	D3	Connection	H±1	S1	S2
S113/A113Z	40	86	120	121.5	136.5	148	6.3	1/2	103	12.5	25

Tel:0086-574-23688830  
Fax:0086-574-23688830  
Email:info@st-meter.com  
Web:http://www.st-meter.com

Cixi Sito machinery Co.LTD.  
West Section Gongye Road,Xinpu Town,  
Cixi City,Ningbo,Zhejiang Province,China