

Pressure Gauges

Economical Dry Gauge



Y SERIES BLACK STEEL CASE PRESSURE GAUGE

Y40ZR-Y50ZR-Y63ZR-Y80ZR-Y100ZR

Description:

Standard pressure gauges mainly used for simple pressure measurement of liquids, vapour and gases, which are not crystallising, concretionary and no danger of explosion and that will not attack copper alloy parts



Application

- Pneumatics
- Air compressor
- Pump
- Pressure regulator
- Heating industry
- Air-conditioning
- Health and food industry

Specification

Nominal Size:

1.5"(40mm), 2.0"(50mm), 2.5"(63mm), 3.5"(88mm), 4.0"(100mm), 4.5"(113mm), 6.0"(150mm), 10.24"(250mm)

Accuracy: $\pm 1.0\%$, $\pm 1.6\%$, $\pm 2.5\%$

Pressure Range: -1...0bar to 0...400bar

Working Temperature: -20°C...60°C

Case: Black steel

Ring: Black steel

Connection: Brass

Thread: 1/8", 1/4", 3/8", 1/2", PT, NPT, BSP and individual

Bourdon tube: Phosphor bronze, C-type or Helical type

Movement: Brass or Steel

Dial: Aluminium, White, black lettering

Pointer: Aluminium, black

Window: Glass or plastic

Tel: 0086-574-23688830
Fax: 0086-574-23688830
Email: info@st-meter.com
Web: <http://www.st-meter.com>

Cixi Sito machinery Co.LTD.
West Section Gongye Road, Xinpu Town,
Cixi City, Ningbo, Zhejiang Province, China

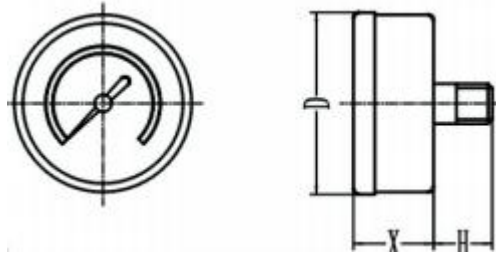
Pressure Gauges

Economical Dry Gauge



Options

Customize range, scale or logo; Coloured sector, connection thread, pressure needle Rubber cover etc.



Back connection

Dimensions in mm				
Types	Nom.size	D	X	H
Y40ZR	40	42	25	16
Y50ZR	50	52.5	28.5	20.5
Y63ZR	63	63	28.7	24
Y80ZR	80	80.5	31	27
Y100ZR	100	100	37.5	27

Tel:0086-574-23688830
Fax:0086-574-23688830
Email:info@st-meter.com
Web:http://www.st-meter.com

Cixi Sito machinery Co.LTD.
West Section Gongye Road,Xinpu Town,
Cixi City,Ningbo,Zhejiang Province,China